

## Ordering Information

Cat. No.	Size	Closures/ Envelope	Envelopes/ Box	Boxes/ Cases
<b>3M™ Steri-Strip™ Reinforced Skin Closures</b>				
R1540	1/8 in. x 3 in./3mm x 75mm	5	50	4
R1541	1/4 in. x 3 in./6mm x 75mm	3	50	4
R1542	1/4 in. x 1-1/2 in./6mm x 38mm	6	50	4
R1546	1/4 in. x 4 in./6mm x 100mm	10	50	4
R1547	1/2 in. x 4 in./12mm x 100mm	6	50	4
R1548	1 in. x 5 in./25mm x 125mm	4	25	4
R1549	1/2 in. x 2 in./12mm x 50mm	6	50	4
<b>3M™ Steri-Strip™ Elastic Skin Closures</b>				
E4540	1/8 in. x 3 in./3mm x 75mm	5	50	4
E4541	1/4 in. x 3 in./6mm x 75mm	3	50	4
E4542	1/4 in. x 1-1/2 in./6mm x 38mm	6	50	4
E4546	1/4 in. x 4 in./6mm x 100mm	10	50	4
E4547	1/2 in. x 4 in./12mm x 100mm	6	50	4
E4548	1 in. x 5 in./25mm x 125mm	4	25	4
E4549	1/2 in. x 2 in./12mm x 50mm	6	50	4
<b>3M™ Steri-Strip™ Blend Tone Skin Closures</b>				
B1550	1/8 in. x 3 in./3mm x 75mm	5	50	4
B1551	1/4 in. x 3 in./6mm x 75mm	3	50	4
B1553	1/4 in. x 4 in./6mm x 100mm	10	50	4
B1557	1/2 in. x 4 in./12mm x 100mm	6	50	4
B1559	1/2 in. x 2 in./12mm x 50mm	6	50	4
<b>3M™ Steri-Strip™ Antimicrobial Skin Closures</b>				
A1840	1/8 in. x 3 in./3mm x 75mm	5	50	4
A1841	1/4 in. x 3 in./6mm x 75mm	3	50	4
A1842	1/4 in. x 1-1/2 in./6mm x 38mm	6	50	4
A1846	1/4 in. x 4 in./6mm x 100mm	10	50	4
A1847	1/2 in. x 4 in./12mm x 100mm	6	50	4
A1848	1 in. x 5 in./25mm x 125mm	4	25	4
<b>3M™ Steri-Strip™ Wound Closure System*</b>				
W8512*	Dressing: 2-3/8 in. x 1-7/8 in./60mm x 47mm Closure: 1-7/8 in. x 1/2 in./47mm x 12mm	1	25	4
W8514*	Dressing: 2-3/8 in. x 1-7/8 in./60mm x 47mm Closure: 1-7/8 in. x 1/2 in./47mm x 12mm	3	25	4
W8516*	Dressing: 2-3/8 in. x 1-7/8 in./60mm x 47mm Closure: 1-7/8 in. x 1/2 in./47mm x 12mm	5	25	4
<b>3M™ Steri-Strip™ Compound Benzoin Tincture</b>				
C1544	2/3cc	40		4
<b>3M™ Steri-Strip™ Skin Closure Rack</b>				
1555	19-1/2 in. x 5-7/8 in. x 3 in.	4 or 8 Steri-Strip boxes of any combination		1

\*CAUTION: The package of this product contains natural rubber latex which may cause allergic reactions.

## Skin Closure Removal

### Step 1

Remove cross stays. Gently grasp and loosen ends of 3M™ Steri-Strip™ closure.

### Step 2

Stabilize the skin with one finger. Remove Steri-Strip closure “low and slow” towards wound, keeping it close to skin surface and pulled back over itself. Removing Steri-Strip closure at an angle will pull at the epidermis increasing risk of mechanical trauma.

### Step 3

As the Steri-Strip closure is removed, continue moving finger as necessary, supporting newly exposed skin. When both sides of the Steri-Strip closure are completely loosened, lift strip up from center of wound.

### For more information:

Contact your 3M Critical & Chronic Care Solutions representative, call the 3M Healthcare Helpline at 1-800-228-3957 or visit us at [Go.3M.com/3MSteriStrip](http://Go.3M.com/3MSteriStrip)



**Critical & Chronic Care Solutions Division**  
2510 Conway Avenue  
St. Paul, MN 55144, USA  
1-800-228-3957  
[www.3M.com/healthcare](http://www.3M.com/healthcare)

3M Canada  
P.O. Box 5757  
London, Ontario N6A 4T1  
Canada  
1-800-364-3577  
[www.3M.com/cahealthcare](http://www.3M.com/cahealthcare)

3M and Steri-Strip are trademarks of 3M. Please recycle. Printed in U.S.A. © 3M 2013. All rights reserved. 70-2011-5474-0

**3M™ Steri-Strip™**  
Adhesive Skin Closures



# Application and Removal Pocket Guide

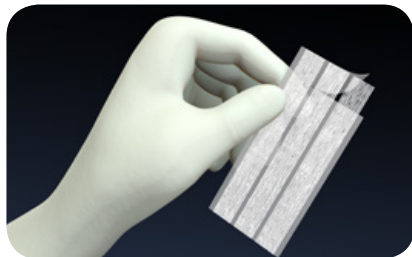


# 3M™ Steri-Strip™ Adhesive Skin Closures—Skin Closure Application

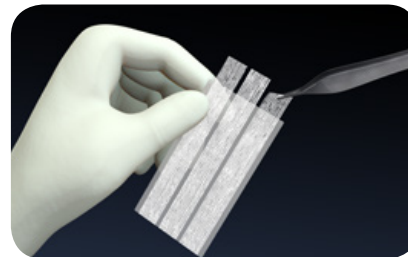


1. Clean and dry skin at least two inches around wound. If enhanced strip adhesion is desired, a thin layer of 3M™ Steri-Strip™ Compound Benzoin Tincture (CBT) may be applied on skin up to wound edge.\* If distention or movement is anticipated, consider using 3M™ Steri-Strip™ Elastic Skin Closures.

\*Avoid contacting wound with CBT as it may impair wound healing.



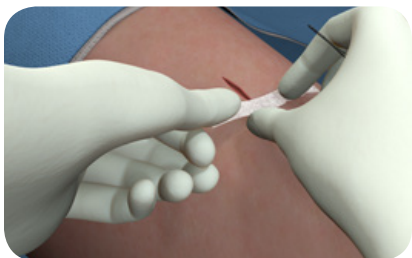
2. Peel back package tabs to access the sterile Steri-Strip closures. Remove card, using sterile precautions as necessary. Bend card at end perforation and gently remove tab.



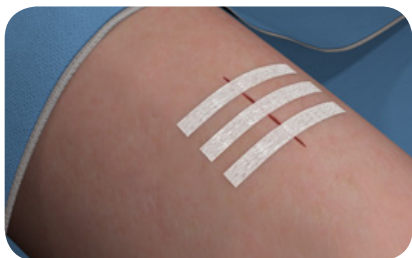
3. Grasp end of skin closure with forceps or gloved hand; lift straight upward (90 degree angle). Steri-Strip closures lifted at a lesser angle or directly back on themselves may “curl,” complicating handling.



4. Wound closure generally starts at the middle of the wound. Steri-Strip closures must be applied without tension. Do not stretch or “strap” Steri-Strip closures. Apply one-half of first Steri-Strip closure to wound margin and press firmly in place.



5. Using fingers or forceps, appose skin edges as closely as possible. Press free half of Steri-Strip closure firmly on other side of wound.



6. The rest of the wound should be closed with additional Steri-Strip closures spaced approximately 1/8 inch (3mm) apart by:
  - (a) sequentially bisecting remaining length of wound with Steri-Strip closures
  - or
  - (b) applying Steri-Strip closures 1/8 inch apart until edges are completely approximated.

If edges are not accurately apposed, remove Steri-Strip closures over affected area (peeling each side towards wound) and reapproximate wound.



7. Additional Steri-Strip closures may be applied parallel to wound, approximately 1/2 inch in from ends (cross stays, railroad tracks). This may reduce stress beneath the ends of Steri-Strip closures decreasing risk of skin tension blisters and premature lifting of Steri-Strip closures.

**Tip:** If tension is noted under Steri-Strip skin closures, they may be replaced under the direction of a health care professional. Lifted edges of Steri-Strip closures may be trimmed. However, when less than 1/2 inch of Steri-Strip closures remains on either side of wound, one might consider gently removing the Steri-Strip closure and replacing it with a new one.